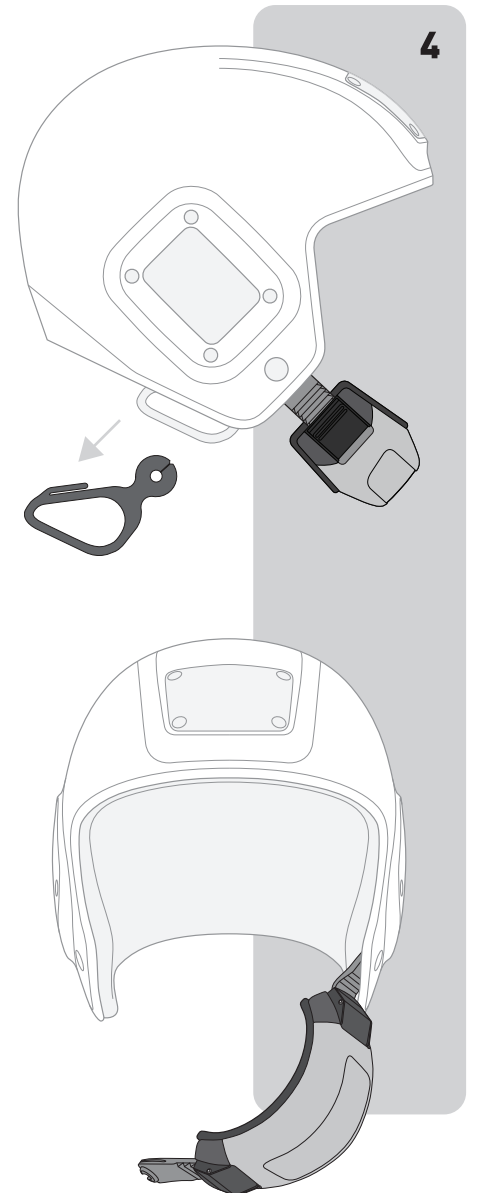
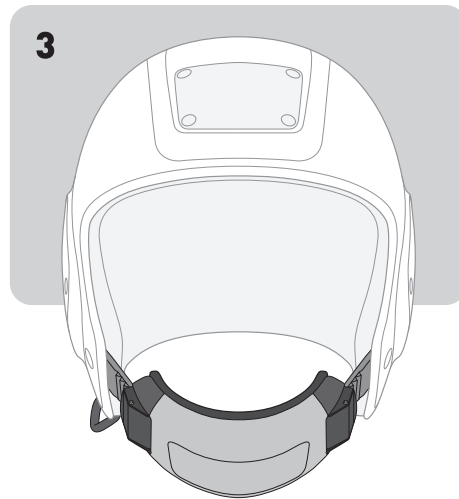
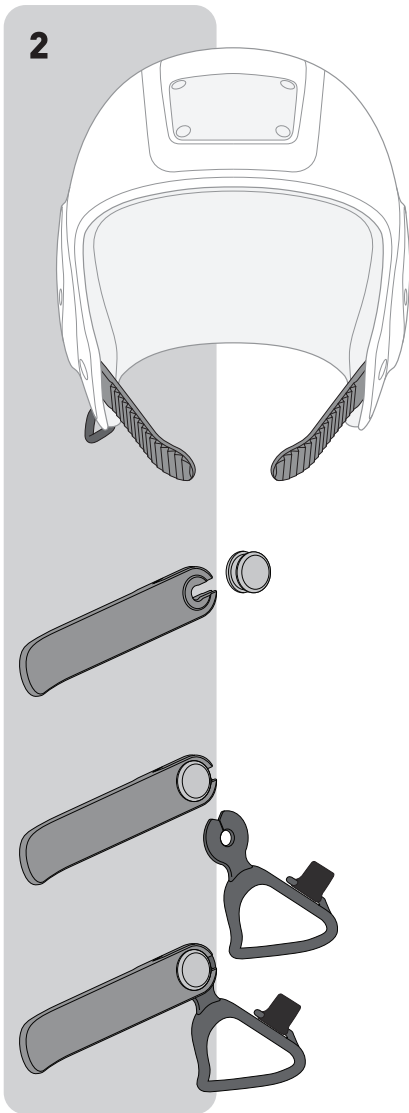
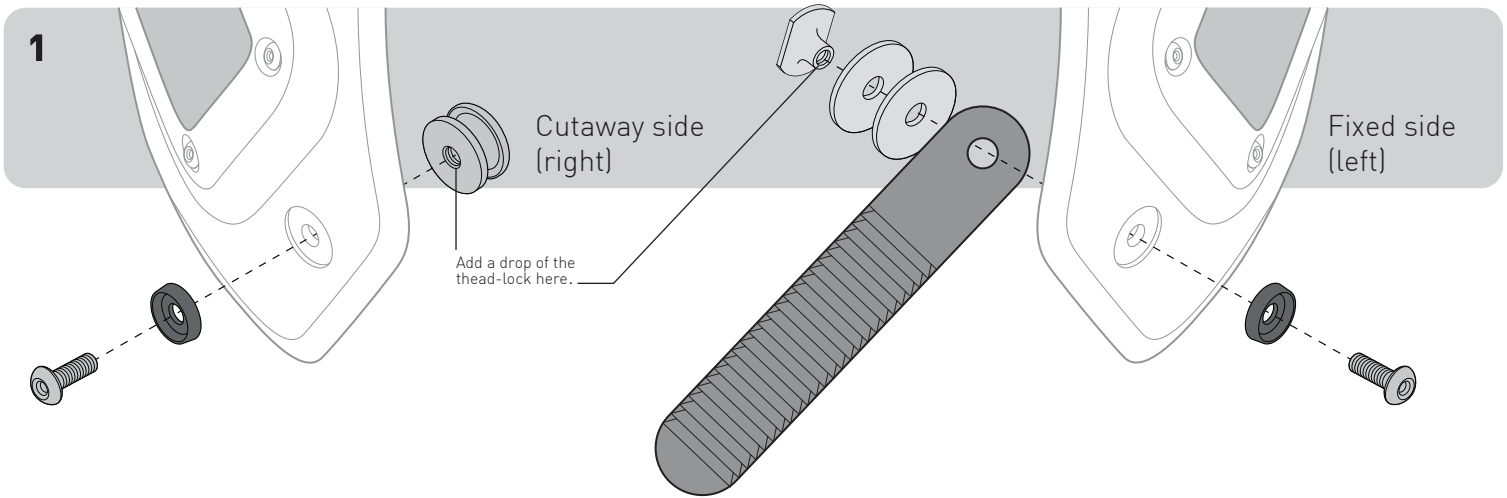


# Cutaway Chin-Cup Assembly



## Steps

1- Fixate the hardware as shown (remember to add a drop of the thread-lock provided in the package)

2-Assembly cutaway system;  
 A) Insert ladder strap into the bobbin.  
 B) Slide handle into the slot to lock it.  
 C) Use the Velcro tab to fixate the handle in place and avoid rotation

3- Place and adjust your chin-cup.

4-To cutaway your chin-cup just pull off the handle.